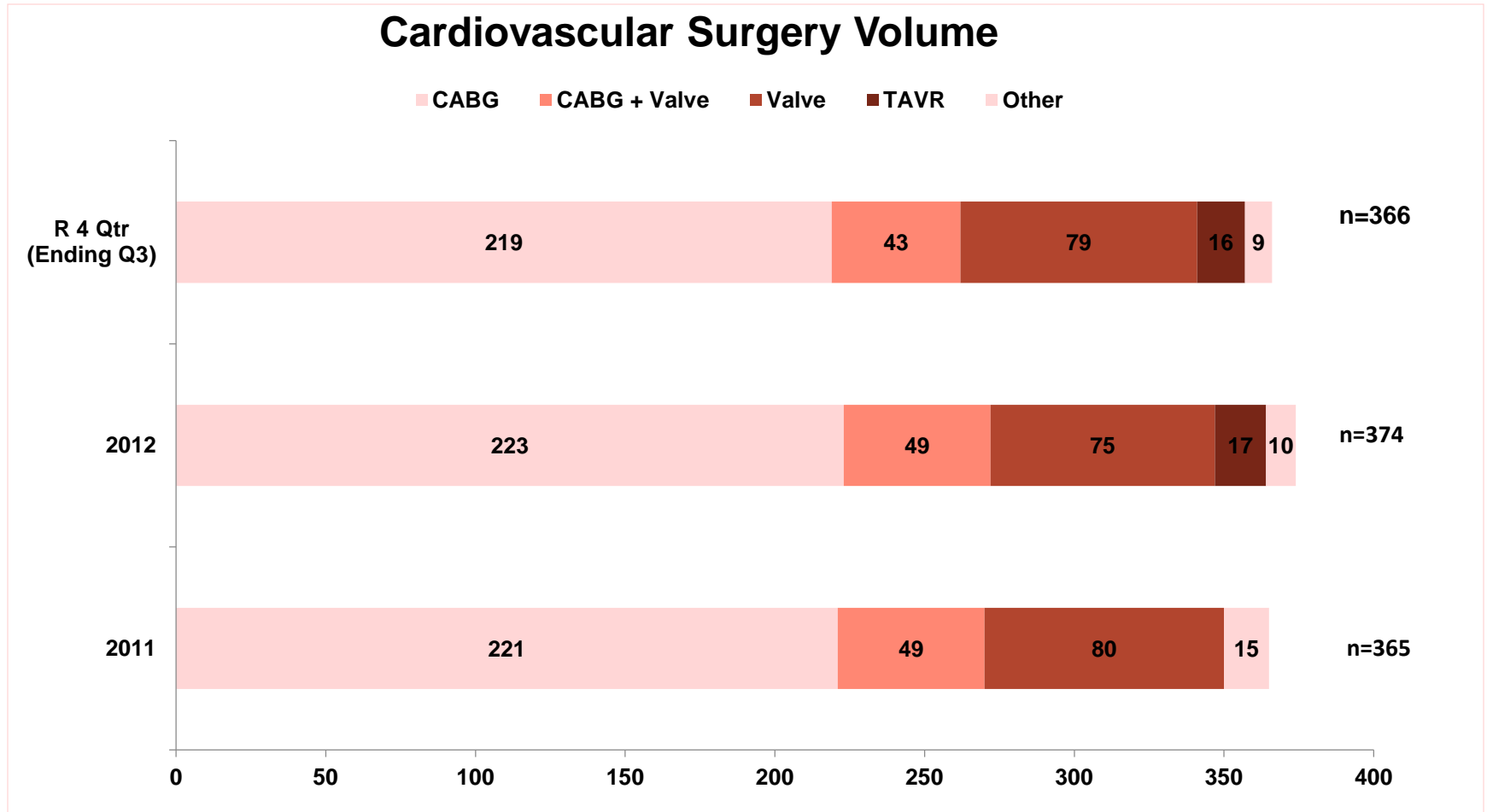


Cardiothoracic Surgery Program

Cardiothoracic Surgery Program

- Coronary artery bypass grafting (CABG)
- Off-pump coronary artery bypass (beating heart surgery)
- Heart valve repair or replacement
- Minimally invasive valve repair
- Transcatheter Aortic Valve Replacement (TAVR)
- Thoracic and abdominal aortic dissections
- Endovascular aortic stent grafting

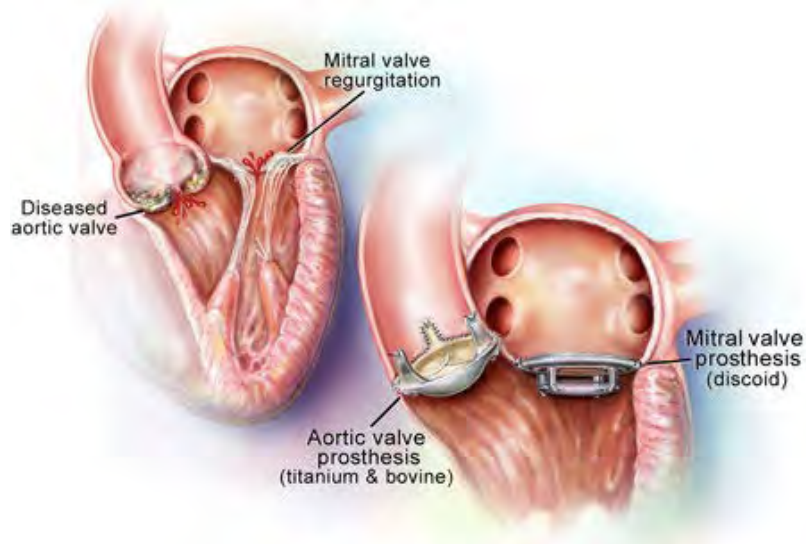
Cardiac Surgery Volumes



Valve Repair and Replacement

- Open-chest or minimally invasive surgical techniques
- 3-D transesophageal echocardiography (TEE) in OR
- Mitral valve replacement and repair
- Aortic valve replacement and repair

Valve Replacement



Mechanical valve



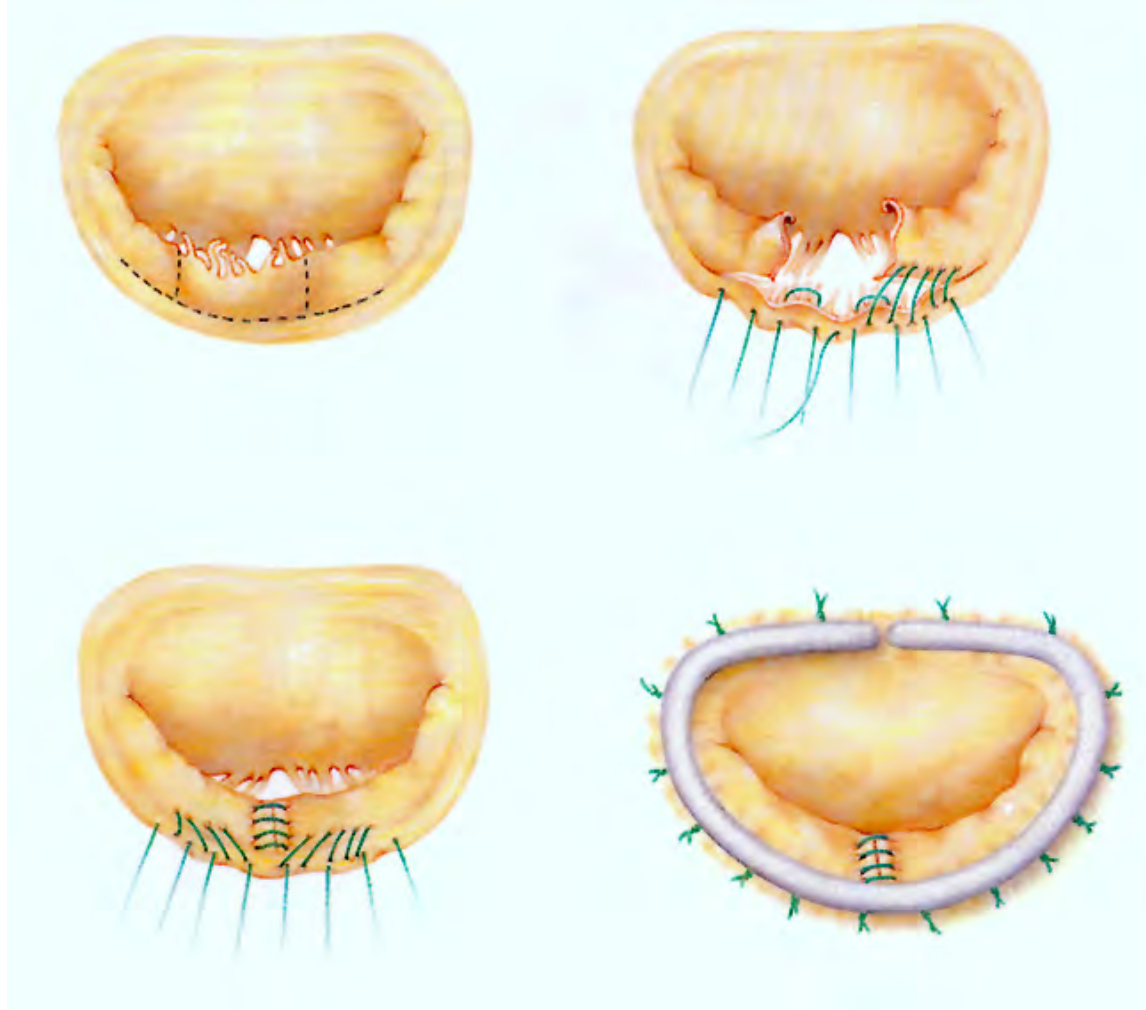
Tissue valve



Artificial valve is sewn in place

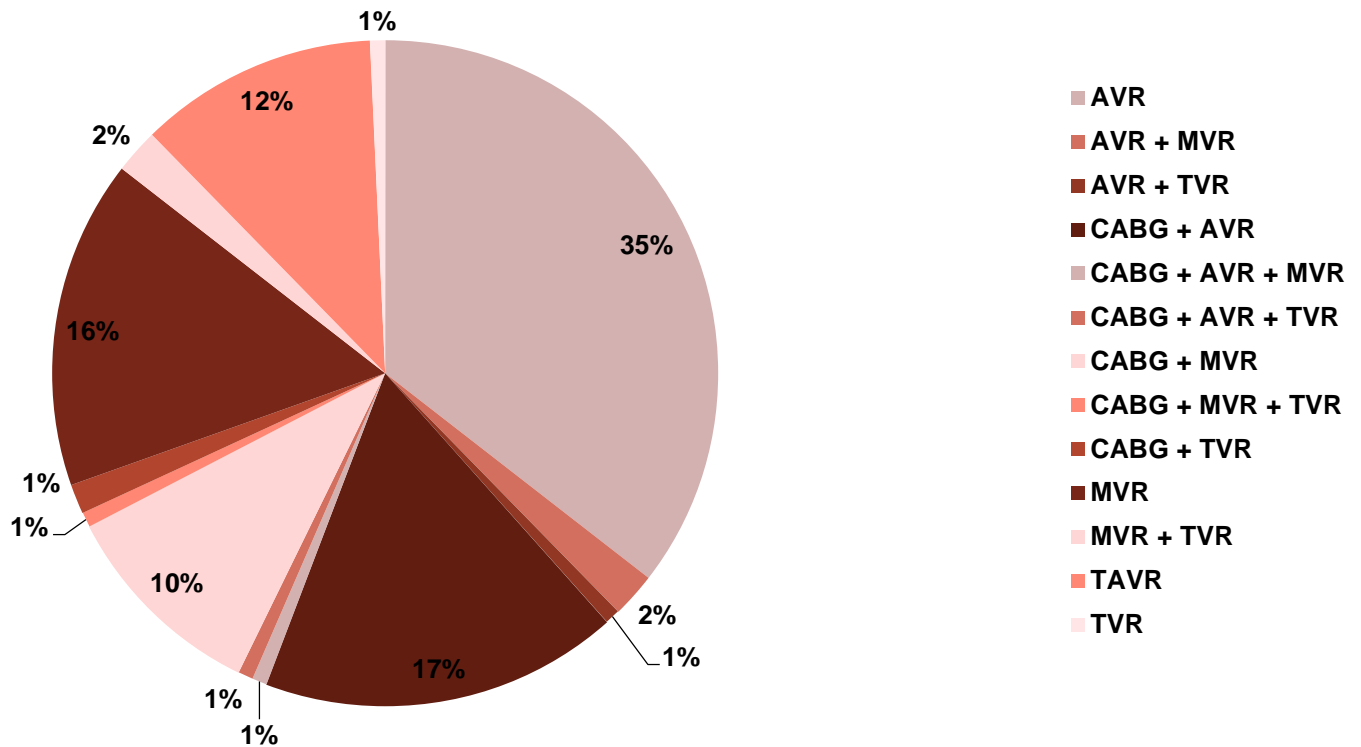
© Healthwise, Incorporated

Valve Repair



Cardiac Valve Surgery

Valve Breakdown
Qtr. 4 2012 to Qtr. 3 2013

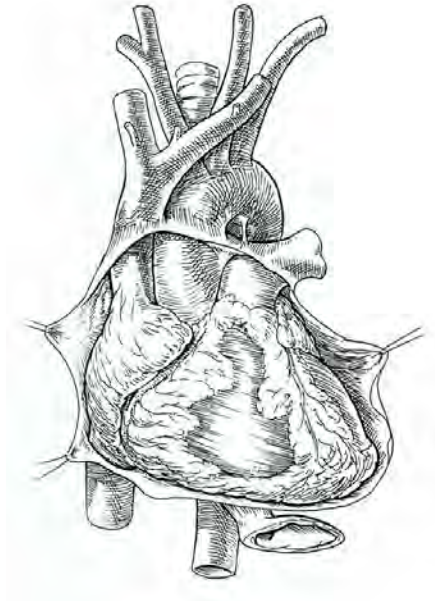


Minimally Invasive Surgical Procedures

- Mitral valve repair and replacement
- Atrial septal defects
- Removal of cardiac tumors
- Atrial fibrillation (Maze)
- Stent grafts for aortic aneurysms and dissections

Aortic Treatment Program

- Provide rapid diagnosis and treatment of life-threatening thoracic aortic syndromes and other specialized aortic conditions
- Type A (ascending) aortic dissection
- Type B (descending) aortic dissection
- Symptomatic or leaking thoracic aneurysms
- Intramural hematoma
- Penetrating ulcers
- Traumatic aortic transection or injury
- Asymptomatic thoracic aortic aneurysms requiring monitoring for expansion or elective repair



Ventricular Assist Devices (VAD)

- Offers temporary support for one or both ventricles in circumstances where the heart has failed but has the potential to recover
- Cardiogenic shock following events such as acute MI, myocarditis or open heart surgery
- Approved for all potentially recoverable indications of acute heart failure

CARDIAC SURGERY OUTCOMES	2012	STS Benchmark	R 4 Qtr (Ending Q3)
CV Major Surgery Mortality	2.10%	2.40%	2.30%
CABG Mortality	1.40%	1.90%	1.40%
CABG Deep Sternal Infection	0.00%	0.30%	0.00%
CABG Re-op for Bleeding	0.50%	1.80%	1.00%
CABG Post-op Permanent Stroke	0.50%	1.20%	0.50%
CABG Readmits	6.20%	9.50%	5.70%
CABG ALOS (in days)	9	9.2	9.1

Cardiac Surgery Team

- 5 board certified cardiothoracic surgeons
- 4 physician assistants
- Dedicated cardiac anesthesiologists, certified in transesophageal echocardiography (TEE)
- Dedicated cardiac operating room staff 24 hours/day
- Critical care and telemetry nursing staff
- Cardiac nurse educators
- Pharmacy, respiratory and physical therapy staff

Questions?



